



# ANTAI GROUND MOUNTING KITS

## 2X9 PANEL ARRAY PACKAGE



Local  
warehouse  
stock



Large panel  
compatible



Maximum  
cost-effective



Australian  
engineer  
certified



Standardized  
kit design



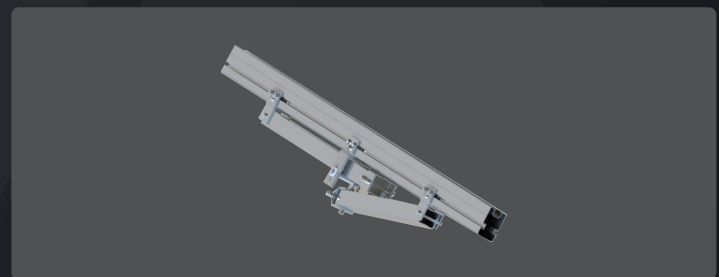
Adjustable  
tilt angle

## Components for a standard 2x9 package

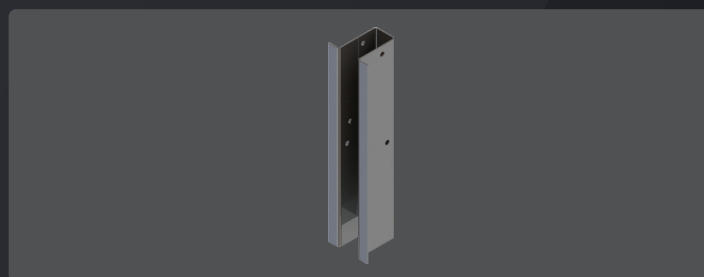
Item	Antai Ground Mounting Rail 3700mm
Material	Anodized Aluminum 6005-T6
QTY/Kit	12pcs
Weight	5.6kg / pc, 67.2kg / 12pcs
Pack Dimension	3700mm(L)*100mm(H)*50mm(W)/pc



Item	Antai Ground Mounting Pre-assembled Girder Sets
Material	Anodized Aluminum 6005-T6
QTY/Kit	4 sets
Weight	12.96kg / set, 51.84kg / 4sets
Pack Dimension	3700mm(L)*200mm(H)*60mm(W)/set



Item	Antai Ground Mounting U Pile 3600mm
Material	Galvanized Steel
QTY/Kit	4pcs
Weight	42.05kg / pc, 168.2kg / 4pcs
Pack Dimension	3600mm(L)*140mm(H)*140mm(W)/pc



Item	Antai Ground Mounting Accessory Kit
Accessories	<ul style="list-style-type: none"> <li>Mid clamp 30 / 35 x32pcs</li> <li>End clamp 30 / 35 x8pcs</li> <li>Rail clamp x32pcs</li> <li>M10x90 Bolt/Nut x4pcs</li> <li>Connector x4pcs</li> <li>Earthing clip x32pcs</li> <li>Grounding Lug x4pcs</li> <li>Rail cap x8pcs</li> <li>Beam cap x8pcs</li> <li>Rail splice x10pcs</li> </ul>
Weight	10kg / box
Pack Dimension	500mm(L)*400mm(H)*300mm(W)/box

Please contact us for other arrays

## Technical Data :

Tilt Angle	20° / 25° / 30° - adjustable
Wind Load	Region A / B1 / B2
Max Module Size	2300x1200mm
Panel Layout	2x9 standard kit-expandable
Design Standard	AS / NZS 1170, AS / NZS 1664.1, AS 4100, AS 2159
Foundation Type	Driven pile or concrete pier
Space Required	11.1m(L) x 4.4m(W)

Please contact us for other technical conditions